



**Glass Walls**

**JUUNOO**

# JUUNOO Single Glaze

## Technical data sheet

### Glass panel type

66.2  
66.2A  
88.2  
88.2A

### Acoustic rating\*

35 (-2;-3) dB  
36 (0;-3) dB  
± 37 (-1;-3) dB  
38 (-1;-3) dB

### Maximum wall height

3500 mm (±8 mm)

### Panel dimensions

By default (W x H) 790 mm x 2333 mm  
or made to measure, tailored to jobsite requirements

### Glass material options

Clear by default, low-iron, others upon request

### Profile material

Aluminum (80% recycled materials)

### Profile finish options



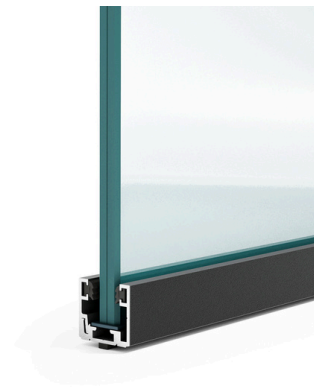
White



Black



Silver



**Total profile dimension**  
(W x H) 30 mm x 28 mm

\*Rw (C; Ctr) Test opening = 9.84 m<sup>2</sup>

# JUUNOO Double Glaze

## Technical data sheet

### Glass panel thickness and type

66.2  
66.2A  
88.2A  
66.2A + 88.2A

### Acoustic rating\*

50 (-2;-6) dB  
50 (-2;-8) dB  
± 54 (-2;-6) dB  
56 (-2;-7) dB

### Maximum wall height

3500 mm (±8 mm)

### Panel dimensions

By default (W x H) 790 mm x 2333 mm  
or made to measure, tailored to jobsite requirements

### Glass material options

Clear by default, low-iron, others upon request

### Profile material

Aluminum (80% recycled materials)

### Profile finish options



**Total profile dimension**  
(W x H) 127 mm x 28 mm  
(adjustable width)

\*Rw (C; Ctr) Test opening = 9.84 m<sup>2</sup>



+32 (0)56 44 18 90

Blokkestraat 51

B-8550 Zwevegem

© Feb 2025 JUUNOO NV

**JUUNOO**